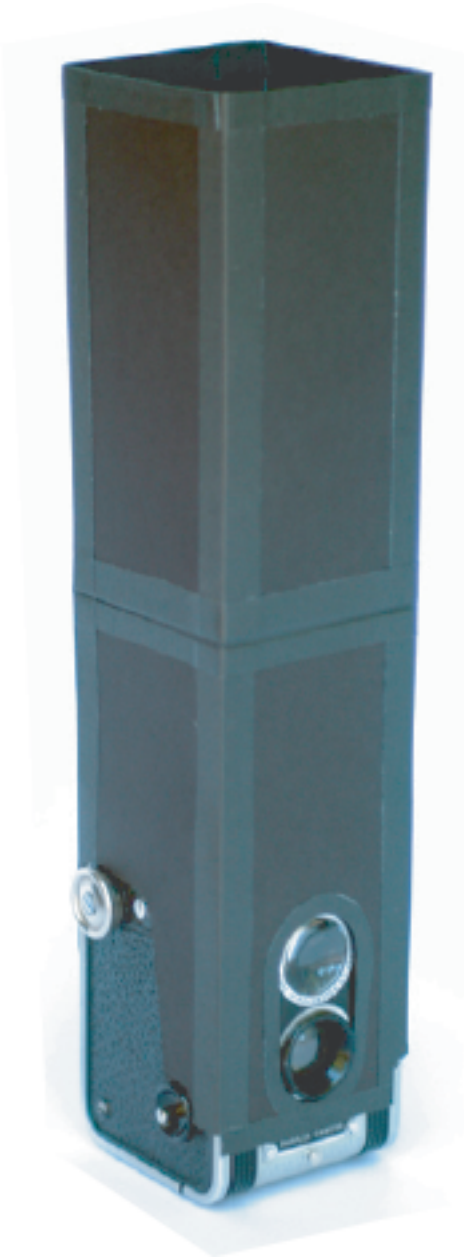


myContraption v2

Kodak Duaflex • Through the Viewfinder

Russ Morris

2006.07.19



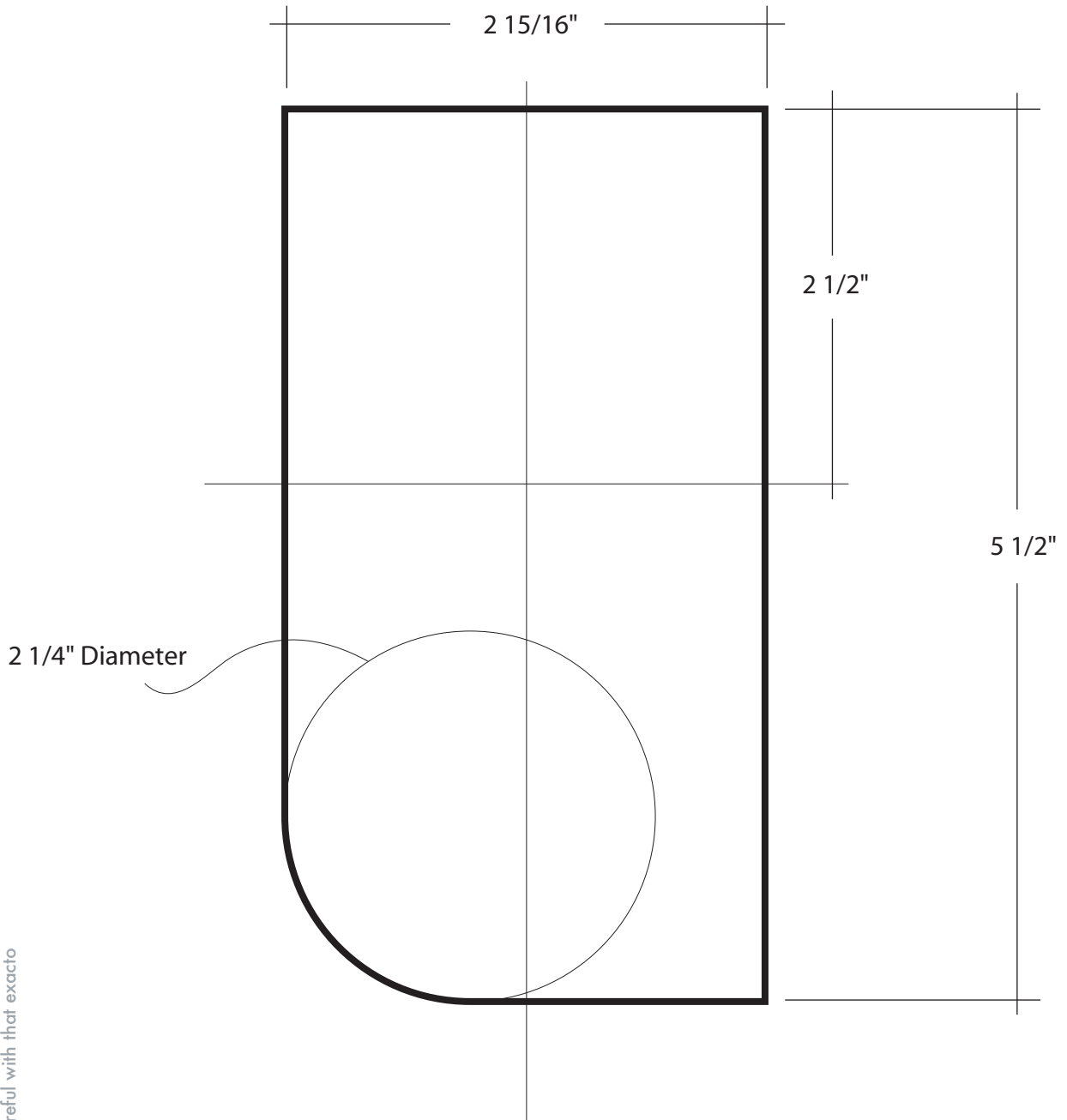
Thick black paper
Opaque Tape
Straight Edge
Exacto/Utility Knife
Compass/Circle Template

1. Cut out four lower panels using dimensions provided on the following pages. Mark panel names on inside.
2. Determine upper panel height* and cut four panels at required height. Front and back upper panels should be 3" wide, Left and right upper panels should be 2 15/16" wide. Mark panel names on inside.
3. Tape together lower panels on the outside using an opaque tape. Leave about 1/16" between panels. Do not complete channel!
4. Tape together upper panels on the outside. Leave about 1/16" between panels. Do not complete channel!
5. Tape upper panels to lower panels on both the inside and outside, leaving about 1/8" gap to accommodate folding.
6. Finish taping entire channel. Leave about 1/16" between panels. I add tape to the top of the channel to avoid damage from the camera.
7. You can add tape around all edges if you're concerned about damage, but it's not really necessary.

* You'll have to figure out how close your camera/lens can get to the viewfinder and still focus to determine how tall the upper channel needs to be. My macro lens is 130mm and I made the top half of the channel 6" tall.



Align all top edges for assembly



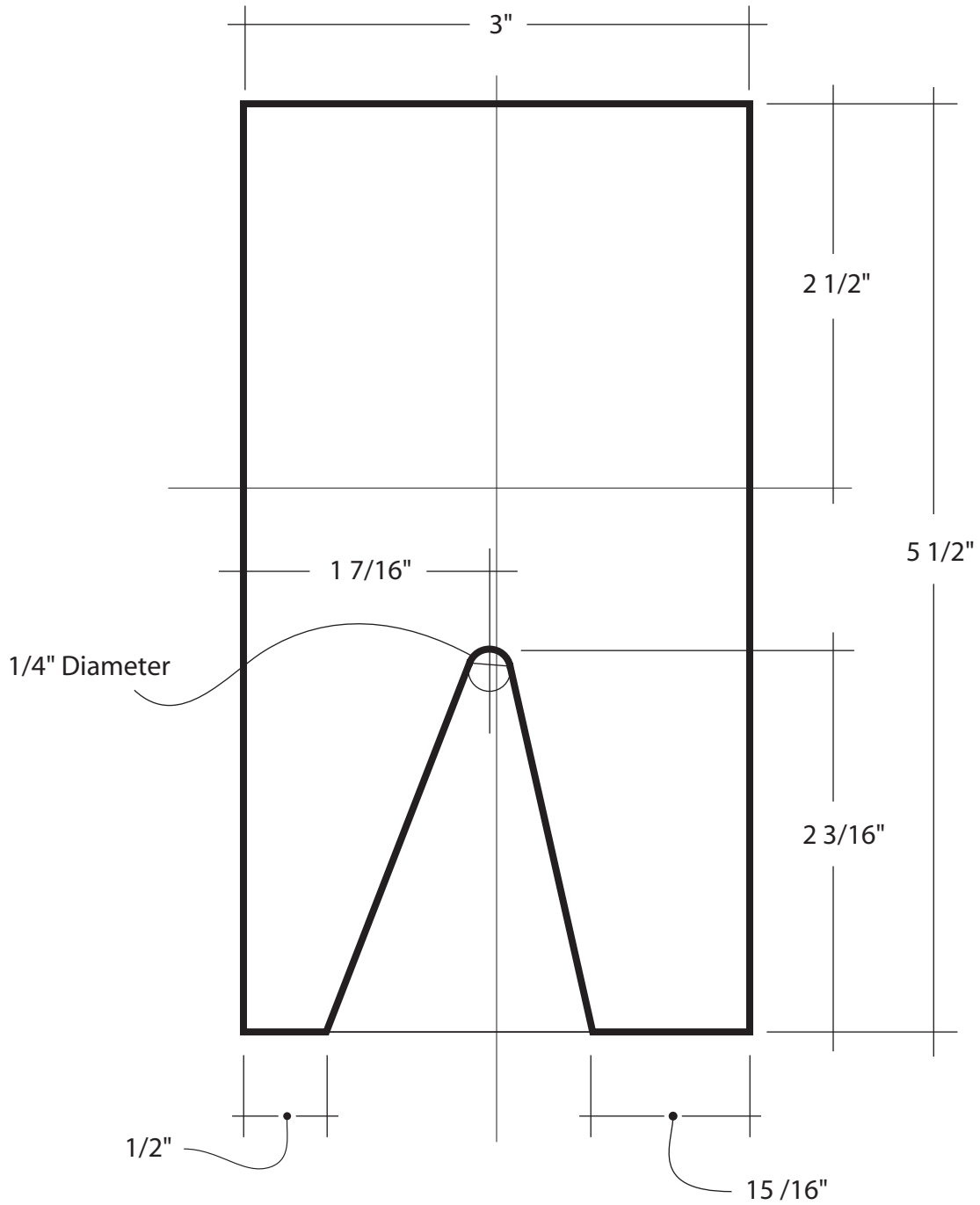
Please note that these dimensions are for the Duciflex 1 in my possession. Slight modifications may be required while putting your contraption together. No guarantees. No refunds. Not good with any other offer. Your mileage may vary. Please have fun, but be damn careful with that exacto knife!

BACK INSIDE

myContraption v2 - Russ Morris
russmorris.com/photoblog • [flickr.com/photos/russmorris](https://www.flickr.com/photos/russmorris)
russpix@gmail.com



Align all top edges for assembly



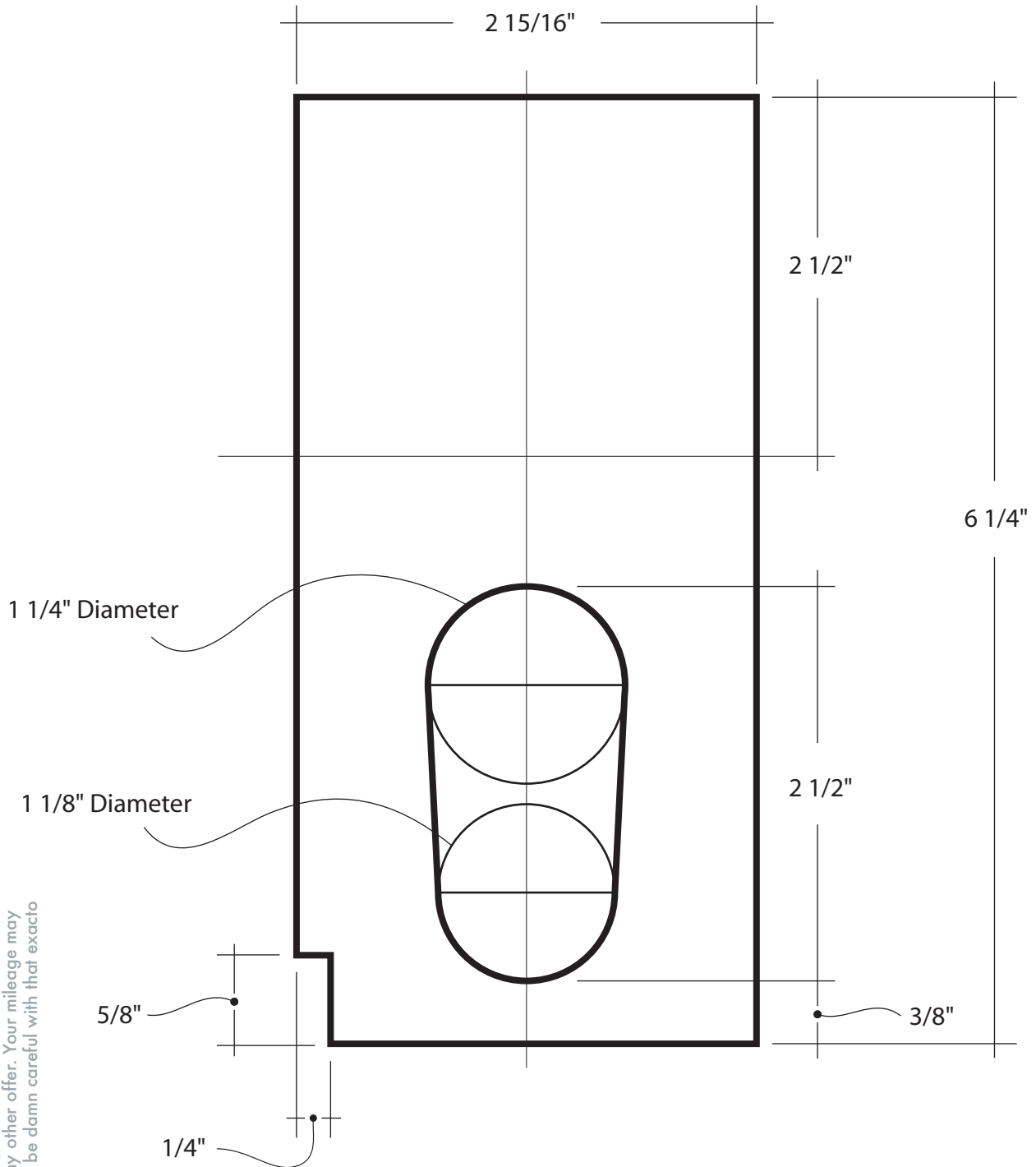
RIGHT INSIDE

myContraption v2 - Russ Morris
russmorris.com/photoblog • flickr.com/photos/russmorris
russpix@gmail.com

Please note that these dimensions are for the Ducflex 1 in my possession. Slight modifications may be required while putting your contraption together. No guarantees. No refunds. Not good with any other offer. Your mileage may vary. Please have fun, but be damn careful with that exacto knife!



Align all top edges for assembly



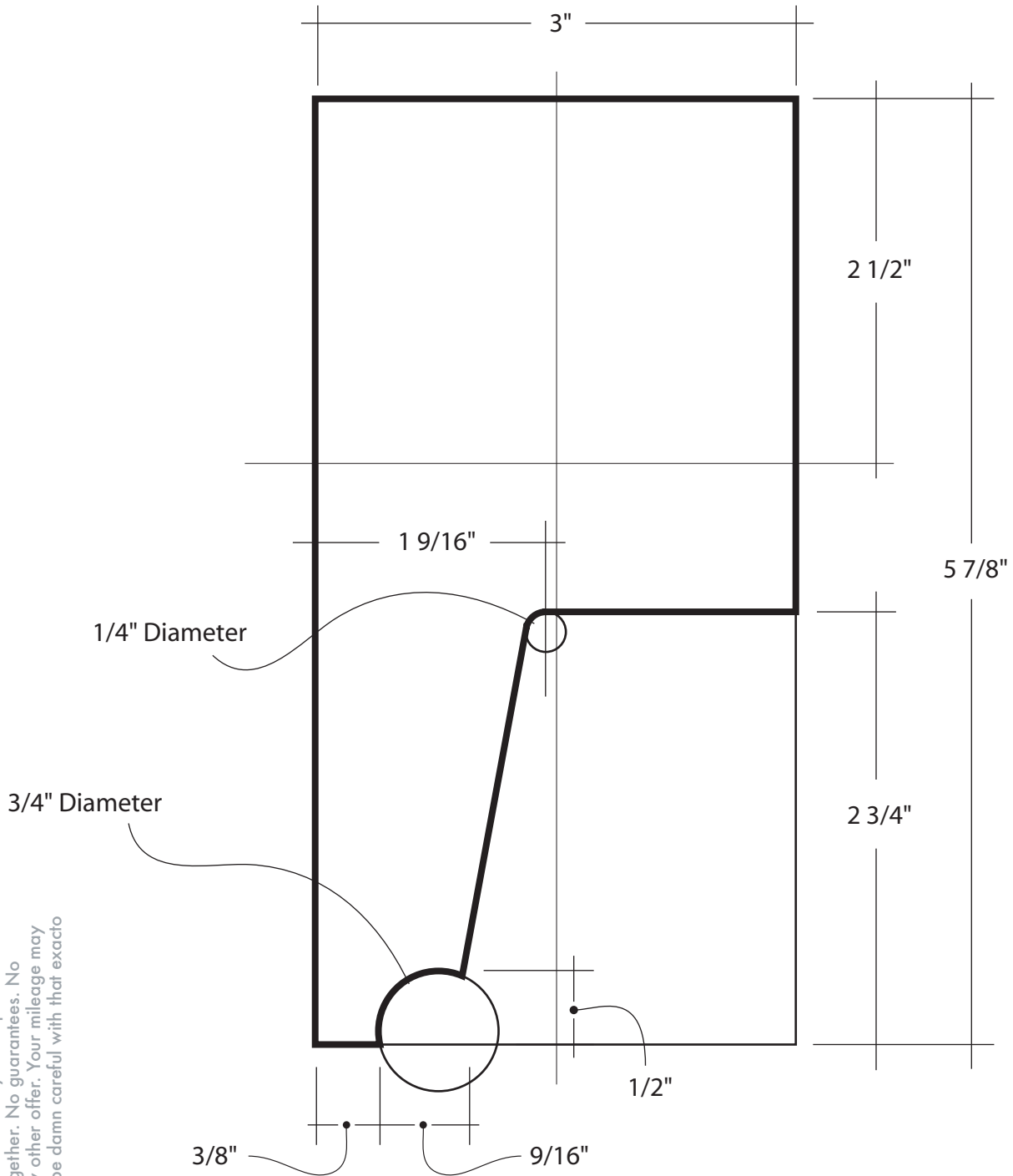
FRONT INSIDE

Please note that these dimensions are for the Ducflex 1 in my possession. Slight modifications may be required while putting your contraption together. No guarantees. No refunds. Not good with any other offer. Your mileage may vary. Please have fun, but be damn careful with that exacto knife!

myContraption v2 - Russ Morris
russmorris.com/photoblog • [flickr.com/photos/russmorris](https://www.flickr.com/photos/russmorris)
russpix@gmail.com



Align all top edges for assembly



Please note that these dimensions are for the Ducflex 1 in my possession. Slight modifications may be required while putting your contraption together. No guarantees. No refunds. Not good with any other offer. Your mileage may vary. Please have fun, but be damn careful with that exacto knife!

LEFT INSIDE

myContraption v2 - Russ Morris
russmorris.com/photoblog • flickr.com/photos/russmorris
russpix@gmail.com